



GirlGuiding
New Zealand
Ngā Kōhine Whakamahiri O Aotearoa

Annual Report Pūrongo-ā-tau

2022





YOU BE THE GUIDE



Vision

All girls and young women are valued, inspired, and empowered to take action to change their world.

Mission

Enable girls and young women to develop into confident, adventurous, and empowered leaders in their local, national and global communities.



Fun, friendship and adventure

GirlGuiding NZ is a non-profit organisation that's been transforming the lives of girls and young women in Aotearoa for 110 years. We are a founding member of the World Association of Girl Guides and Girl Scouts (WAGGGS) that can be found in 152 countries around the world.

At GirlGuiding NZ, we provide girls and young women opportunities to experience something new, contribute to their community, build leadership skills and learn a little about themselves in the process.

Our philosophy is girl-led. That means we offer every girl the opportunity to decide and take charge of her Guiding journey. We empower her to learn new skills and build confidence through fun, adventure and friendship in a safe and positive environment. We believe that providing these opportunities now enables her to take action to change her world in the future.

Our action-packed, age-appropriate programmes have something for every girl. Weekly unit meetings, digital Guiding, camps

and tramps, adventure-based and community service activities make up the Guiding experience and offer numerous areas of choice, challenge and achievement.

As part of GirlGuiding NZ, all rangatahi | young people have the opportunity to experience fun outdoor activities and camping adventures with an emphasis on teamwork – everything from raft building and horse riding to rock climbing and overnight tramps.

We encourage girls and volunteers to make a personal and positive commitment to stand up for issues they believe in and change the world around them for the better. Members are encouraged to involve themselves in community service and participate in international opportunities.

GirlGuiding New Zealand would simply not exist without the dedicated Leaders, volunteers, supporters and staff who share a passion for seeing young girls grow into confident, adventurous women capable of taking action in their communities.





CONTENTS

Vision and Mission	3
Board Chair and Chief Executive report	5
Participation at a glance	6-7
Our stories	8-12
Recognising achievement and service	14
Our volunteers	15-16
Funding partnerships	17-18
Funding grants and sponsors	19-20
2022 Financial statement	21-22
2022 National Board	23
Coming in 2023	24



Board Chair and Chief Executive report

Tena koutou katoa | Greetings to you all

Guiding is strong, resilient and adaptable. We have continued to see this first-hand throughout 2022.

Guiding has provided a safe space for girls and young women to be themselves, develop a network of supportive friends and have values-based learning experiences. Learning life skills and sharing adventures together not only provides some of the practical skills that our young people need today but sets them up to thrive in the future.

What we do and the difference we make across our communities is significant. The number of girls and young women coming along each week is confirmation that what Guiding offers is recognised and valued, perhaps even more so in our post-Covid society. This could not be achieved without the amazing network of volunteers and staff who make this happen, every week around the motu | country. Our Guiding community has continued to support each other and remain strong.

Active recreation and outdoor adventure is a core part of our Guiding offering. In 2022 there were 996 camping, tramping and adventurous activities available for girls and young women to participate in, delivered as part of our core programme.

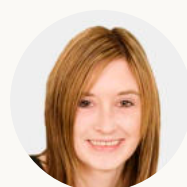
Throughout 2022 we initiated several projects on our journey towards greater diversity and inclusion. The contemporising of the te o Māori badge to our programme was received with great enthusiasm and we

continue to work with appropriate partners to create resources that inspire our members to learn and grow their awareness. Our staff team attended workshops on Te Tiriti o Waitangi, and gender inclusivity. Staff also formed a working group called 'the Rainbow Connection'; developing a draft policy and practice to ensure that we as an organisation embrace all who feel a connection with us and our mission and vision to develop leadership skills in our membership. In 2023 we will incorporate Te Tiriti o Waitangi principles into our 2023-2027 Strategic Plan.

Responding to the post-covid world and a changing of the guard in our senior leadership has not been without its challenges. As we adapt to a different set of circumstances, we are reflecting on what we can do the same, but also what we can do differently.

It is encouraging to see us all looking ahead again and really pulling together to ensure that our movement continues to grow and deliver amazing experiences for girls and young women.

Ngā mihi | Thank you



A handwritten signature in black ink.

Angela Reeve
Interim Chief Executive



A handwritten signature in black ink.

Mirjam Oord
Deputy Board Chair



2022 AT A GLANCE

2022 was another year full of fantastic Guiding events, activities, challenges and experiences. Every week, all over Aotearoa New Zealand, our amazing volunteers delivered Guiding's unique mix of fun, friendship and adventure for thousands of girls of all ages.

9,607

girls and young women aged 5 - 17 years participated in Guiding in 2022

8,231

girls involved in weekly unit meetings

1,553

adults volunteered their time

368

outdoor camps and tramps

170

girls participated in Explore digital Guiding

1,206

girls attended GirlPowered NZ events

81,894

Girl Member badges awarded

80

Queens' Guide awards

646

adventurous activity events

184

Aoraki awards

313

Volunteer awards

17,900

social media followers



GROUP GUIDING AND EXPLORE PARTICIPATION

1,561

Pippins
5 - 6 year olds

Pippins helps girls learn about the world and their place in it, each week learning new things about themselves, other people and the environment. Pippins learn to share and work together as they take on new challenges, from baking to kite making.

2,926

Brownies
7 - 9 ½ years

Brownies are encouraged to discover their passions, independence and develop a sense of ownership of what they are doing. Girls work individually and in teams to explore their interests - from science and technology to creative arts and conservation.

2,865

Guides
9 - 12 ½ years

Guides explore their world - from the backyard to the planets. Developing leadership skills and taking on new challenges in the outdoors and local community is a particular focus.

879

Rangers
12 ½ - 17 years

Rangers are given more flexibility to lead their own adventures, set their own goals and achieve them - from abseiling to international camps. Rangers are supported to advocate for change in their own community and the wider world.

170

Explore
5 - 12 ½ years

Explore is our subscription-based, at home digital programme that allows even more girls across the country to access Guiding. Girls engage with real-world activities, are supported by interactions with our trained Guiding Leaders and earn badges along the way.

1,206

GirlPowered NZ
Jan - June 2022

GirlPowered NZ are casual events open to any and all girls with an emphasis on fun, learning and active recreation. Continued support from Sport NZ enabled us to offer some of these events free of charge.



OUR STORIES

To deliver on our mission, GirlGuiding NZ volunteers consistently deliver great girl-led experiential 'hands on' learning through challenges, games and projects. These are all designed to build confidence, resilience and leadership. In 2022 we have done that in a variety of ways.

Pippins



Titahi Bay and Papakowhai Pippins

attended a local pantomime of Robin Hood as part of their Rock & Roll achievement. The highlight for this exceptionally well-behaved audience was meeting Maid Marion, Robin Hood and one of the merry men after the show.



Karori Pippins

had fantastic experiences with their Design and Build activities, including constructing catapults (and having a blast launching marshmallows across the room), creating imaginative Lego masterpieces, building boats, and finishing with the construction of dams in a nearby stream.

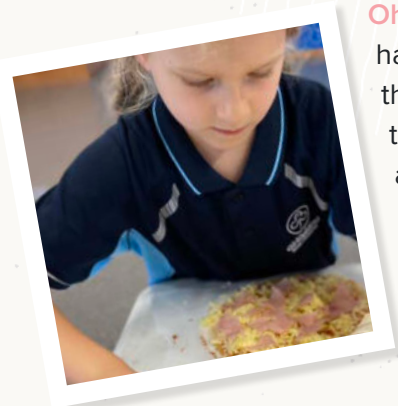
Taita Pippins

had a delicious experience when a parent visited to teach them how to make Pierogi (Polish dumplings).



Brooklyn Pippins

embarked on an exhilarating rock-climbing adventure that was filled with excitement and enjoyment.



Ohauti Pippins

had so much fun creating their own pizzas they had to extend the session to a double one. The pizzas the rangatahi made were served as their dinner.

The Aotea Pippin and Brownie Units

worked together to construct a scarecrow for the 2022 Egmont A&P show. Rangatahi showcase their creativity by utilising recycled materials. Their hard work and enjoyment paid off, achieving second place in the scarecrow competition.



OUR STORIES

Brownies



Endeavour Brownies took a train trip to the nearby beach and had a fantastic time learning about water safety and exploring the fascinating rock pools.

The senior Te Awamutu Brownies

accomplished their Gold Koru badge by dedicating an hour to weed the gardens at a local rest home. They tidied up five gardens and even took the initiative to plant spring bulbs.



Mosgiel Brownies had an exhilarating experience abseiling on camp. Every Brownie successfully completed the abseiling activity and thoroughly enjoyed it.

Tuatoru Brownies

took the initiative to conduct a litter clean-up around their den grounds, carpark and roadside. Their efforts were commendable as they collected three bags of rubbish, along with unexpected items including a tyre, a sign, and even half a spade.

Eastern Lakes, 24th Waiariki, 60th Bay of Plenty Brownies, Rotorua and Aotearoa Rangers

had an adventurous and memorable winter beach camp. They explored stairs, trees and rockpools, created beautiful shell art and, despite the rain, gathered around the campfire.



Mangere Bridge Brownies

got creative with nature, foraging for flowers and leaves to make nature bracelets.



OUR STORIES

Guides

Kōtuku Guides

finished their Get Mucky badge with an incredibly messy and unforgettable evening with fun-filled activities, culminating in an epic colour run.

Whanganui Guides

had a creative and hands-on experience exploring the art of candle making using natural beeswax materials.

Feilding Senior Guides

had a memorable, adventure-filled day trip to Wellington with time spent exploring and discovering our vibrant capital city.

Whangaparaoa Guides

embarked on a full day of adventure, traveling by bus and then ferry to Rangitoto Island. The highlight of their excursion was reaching the summit and the impressive accomplishment of walking 16 – 20k steps each.

Morrinsville Guides

teamed up with Papawai Rangers for a memorable night river walk, topped off with hot chocolate and everyone's favourite treat – s'mores.

Rangers

Papawai Rangers

combined thrilling activities and breath-taking natural scenery at their memorable summer adventure camp, enjoying the Redwood night walk and the Blue & Green Lake walk as well as white water rafting on the Kaituna River.

Kilkenny Rangers

had an exhilarating day at Vector Wero for white water rafting. The rushing water and thrilling rapids added an extra element to an exciting and memorable experience that provided the Rangers with an opportunity to test their skills and bond as a team.

Wakaaranga Rangers

visited Motuihe Island for a tree planting project. Organised by one of the Rangers, the rangatahi | young people focused on track maintenance and planting trees along the track, which proved to be challenging and muddy work.



OUR STORIES

Stewart Island AdventurHers Discovery

30 Rangers from all over Aotearoa New Zealand immersed themselves in the beauty of Stewart Island in October 2022 as part of the Stewart Island AdventurHers Discovery.

From capturing the traditional tourist photo at the Stirling Point signpost and the scenic ferry ride across Foveaux Strait, the group explored Oban and the majestic conversation reserve Mamaku Point that served as their base for the Discovery.

Throughout the event the girls engaged in numerous enjoyable activities. They explored Ulva Island, kayaked and rafted during a beach day, observed penguins at dusk, did a Night Sky tour, spotted kiwi, took a stroll to Acker's Point Lighthouse, gathered around the campfire, played spotlight and other games, practiced bush crafts and ventured into Half Moon Bay to explore.



I ENJOYED MAKING NEW FRIENDS, HEARING THE BIRDSONG, THE BUSH AND SEEING KIWI



MY FAVOURITE PART OF THE STEWART ISLAND DISCOVERY WAS MEETING NEW PEOPLE AND CHALLENGING MYSELF



THIS WOULDN'T HAVE BEEN POSSIBLE WITHOUT THE LOCATION KNOWLEDGE OF THE SOUTHLAND LEADERS IN BOTH INVERCARGILL AND ON THE ISLAND



OUR STORIES

Karapiro Adventure

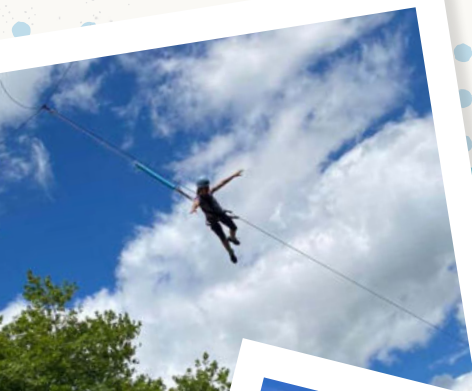
In January 2022 a group of 32 Guides and Rangers, accompanied by six Leaders, embraced novel experiences on an exhilarating week-long camping trip at Mighty River Domain. Participants had the opportunity to try a range of adventurous activities, including archery, mountain biking, kayaking and high/low ropes courses. The girls displayed remarkable teamwork, offered unwavering support for one another and fostered courage in the face of fears.

The consensus was that the trip was truly exceptional. The activity providers expressed their admiration for the girls, stating they were among the most impressive individuals they had worked with.



Abel Tasman Discovery

A group of 40 Rangers and eight Ranger Leaders explored the world-famous Abel Tasman National Park over four days and three nights. Their north-to-south journey led them up and down hills, across river crossings and into strategically located DOC huts. Along the way they were treated to the sight of awe-inspiring waterfalls and breath-taking views across the Park. The Discovery proved to be a source of immense joy for all participants, resulting in new friendships among the girls and Leaders alike.



RECOGNISING ACHIEVEMENT AND SERVICE

81,408 total badges awarded in 2022

13,044

Pippins

26,339

Brownies

24,940

Guides

6,434

Rangers

11,134

Event Badges

(ie Anzac Day, Thinking Day)

Volunteer Awards

We are proud to recognise the dedication and commitment of our volunteers who have continued to work tirelessly for girls.

Two Leaders have completed **55** and **60** years of service - what a tremendous effort.

75 volunteers completed 5 years' of service with Guiding.

50 volunteers completed over 5 years' of service with Guiding.

125

Service Badges

157

Regional Awards

10

National Awards

21

Asia Pacific Awards

89

Leaders LQ Badges



Programme and Optional Badges and Certificates

77,184+ badges and certificates achieved and sent out for the Girls Programme and Optional badges in 2022.

Congratulations to the 80 Rangers who attained their Queen's Guide Award, the highest award available in Guiding, and the 184 Guides who attained their Aoraki award, showing a high level of commitment.

Explore

In 2022 Explore members earned 516 badges and sashes. Just like rangatahi | young people who attend face-to-face unit meetings, our Explore members attend events, earn badges and communicate with their Leaders frequently.

Te Ao Māori badge

Our new Te Ao Māori badge was launched in April 2022. The badge gives s rangatahi the opportunity to explore Māori language, culture and history and increase their awareness of the unique place of Māori heritage in Aotearoa New Zealand. It was embraced by our volunteers with 1854 badges being earned over the three terms. This is the first of many steps designed to further honour and interweave Te Tiriti principles into our way of being across GirlGuiding NZ.



THROUGHOUT MY GIRLGUIDING EXPERIENCE AND ESPECIALLY WHILE WORKING TOWARDS MY QUEEN'S GUIDE AWARD, I WAS ALWAYS PUSHED TO EXPLORE NEW OPPORTUNITIES AND LEARN MORE ABOUT THE WORLD AROUND ME. I HAVE MADE MANY LIFELONG FRIENDS ALONG THE WAY

- ANNA HAINE



OUR VOLUNTEERS

Our volunteers are the soul of GirlGuiding NZ, providing the experiences, feedback and mentoring that makes Guiding so memorable, and so valuable, to our girls. We simply couldn't do what we do without their energy, passion and dedication.

Our volunteers come from a wide range of places, ages and backgrounds. In the last year we welcomed another 268 Unit Leaders to our GirlGuiding NZ team. Many of our new volunteers are previous Girl Members who found the programme so personally rewarding they want to continue their involvement and provide the same experiences and empowerment to the next generation. Our volunteers tell us it is incredibly fulfilling to give back to the community and help shape the girls into confident and adventurous young women.

Our volunteer surveys and meetings held throughout 2022 helped us identify where the frontline of our organisation needs more support and resourcing. We have started to implement changes based on the information gathered, including:

- ✓ implementing an increase in Te Hononga funding used to help our volunteers connect with each other on a social level,
- ✓ increasing travel and accommodation subsidies to make it easier for our volunteers to get to training events,
- ✓ implementing workplace support which offers free counselling and financial guidance and planning to help our volunteers, not only in a Guiding capacity, but also personally, and
- ✓ increasing our budget for new volunteer recruitment so we can ensure we have more feet on the ground to support our existing team.



We believe these changes, alongside a new organisational structure designed to improve the level of support and further embed the ONE Team culture between our staff and volunteers, will improve the full experience to all our members. Under the new organisational structure, the Volunteer Support and Recruitment, Girl Member Support, and Recruitment and Resourcing teams have now merged into one team.

VOLUNTEERING HAS HELPED ME GAIN CONFIDENCE

Hannah Jones is vision impaired, but that doesn't slow her down. She works on the staff team recruiting new girls to units as well as running two units of her own. Hannah says that being a Girl Member as a child and her mum being a Leader, along with her love of working with children, becoming a Leader was a natural progression. "It has helped me gain confidence, taken me on lots of adventures. I've built connections with other women and I love feeling like part of the community."





BUILDING A FOUNDATION FOR OUR GUIDING GIRLS TO SHINE AND REACH THEIR GOALS FOR THE FUTURE IS WHY I VOLUNTEER

Sarah Bennet says being the Local Coordinator for team Travis Hub 8 in Canterbury over the last 12 months has been so very rewarding. “Although I hadn’t come from a Guiding background, volunteering for Guiding gave me the chance to put my leadership values and skills into action. When I go home from visiting each of my units I feel so proud of how much they have grown, how passionate they are for their unit and how much fun we all have together.”



VOLUNTEERING FOR GIRLGUIDING NZ HAS CHANGED MY LIFE AND BECOME A BIG PART OF WHO I AM

For Maia Jeffs, sharing experiences, laughter and even the challenging moments and setbacks with

fellow leaders and other Unit Leaders in Christchurch and all over the country has created lasting memories and friendships she’ll cherish. “The most rewarding part of my role is being able to witness the growth and transformation of the girls. Seeing them develop self confidence, resilience and a sense of empowerment fills my heart with joy and pride. Knowing that I played a part, no matter how small, in their journey towards becoming strong and independent young women is incredibly fulfilling. Volunteering has opened so many doors, challenged me to step out of my comfort zone and shaped my character in ways that I could never have

imagined. My journey continues to inspire me and reminds me of the value of giving back and the potential that lies within each and every one of us.”

I FIND THAT AS MUCH AS WE ARE TEACHING AND ENCOURAGING THE CHILDREN, THEY DO THE SAME FOR US

Emma Turner has been a leader for quite a few years and over that time the biggest thing she has learnt is that we are lifelong learners. “Time with the Brownies teaches me not to take life too seriously, after a stressful day at work they remind me to slow down and see the world in a more wondrous way. They teach me to delight and celebrate when you finally get something that you have been struggling with. And ultimately, they teach me that I can have a session plan fly out the window and we can still have a good time and learn together.”



IT’S SAFE TO SAY I LOVE GUIDING

Kat Dimes loves being able to make a positive contribution to the local, regional and national levels of Guiding. Last year she was the Team Leader for Feilding Guides and Unit Leader for Whanganui Guides and the Brownie/ Pippin club. She’s currently the Team Leader of Whanganui Guide Unit. She’s also the Hub 6 Leader Rep on National Forum and has just been selected to be on the new Board Nominations Committee. “I live and breathe Guiding. I love finding new and exciting things for the girls to do to get them excited about Guiding.”



FUNDING PARTNERSHIPS

In 2022, GirlGuiding NZ has continued to work with some amazing funding partners. As a charity, their support is essential to enable us to continue to grow Guiding and provide invaluable experiences to girls and young women in Aotearoa New Zealand. Their generosity and enthusiasm for what we do is very much appreciated.

Griffin's Guide Biscuits hit the shelves again

We are so grateful for Griffin's continued commitment to Guiding and acknowledge the support of Woolworths New Zealand. In 2022, Griffin's baked more than 500,000 packets of Guide Choc Biscuits, with another run of 200,000 new Guide Pink Biscuits to be available in March 2023. These were sold in Countdown, Super Value and Fresh Choice supermarkets with \$1 from every packet donated to GirlGuiding NZ. This resulted in an incredible donation of \$535,160 from Griffin's in 2022.

These funds go towards supporting programme development, volunteer training and the ongoing delivery of Guiding to girls and young women across the motu | country.



Encouraging participation in physical activity



GirlGuiding NZ has continued to work in partnership with Sport New Zealand to encourage participation in physical activity for girls and young women in Aotearoa New Zealand, contributing to their holistic development and wellbeing. Thanks to support from Sport NZ in 2022, we were able to provide workshops on Te Tiriti o Waitangi and gender inclusivity. Sport NZ is also continuing to support us as we strengthen our organisation, network and communities by improving our systems and processes and embedding an agile way of work, so more girls and young women can engage with Guiding.

Sponsor a Girl / We've Got You Girl

GirlGuiding NZ has continued to provide 'We've Got You Girl' financial grants in 2022. Due to the continuing challenges of Covid-19 and the rising cost of living, demand for this fund has remained high. Thanks to our many supporters, regular donors and grant-making trusts, a total of 275 applications were funded so girls and young women could continue their Guiding journey. An astounding \$25,144 was raised through the Sponsor a Girl campaign to fund this initiative.

Sponsor
a Girl



FUNDING PARTNERSHIPS

Annual Christmas campaign focuses on healthy connections

Our annual Christmas Campaign provided supporters with the opportunity to donate and help girls like Maisie form healthy friendships and connections important for improving physical and mental health, as well as strengthening self-esteem. We received a total of \$1,088 in donations which will help with the delivery of Guiding now and in the future.



THANK YOU FOR HELPING ME REALISE THAT NO MATTER WHAT TROUBLES I'VE BEEN THROUGH, YOU'VE ALWAYS BEEN THERE FOR ME. YOU HAVE HELPED ME GAIN CONFIDENCE IN FRONT OF OTHER PEOPLE AND HELPED ME STAND OUT.

MAISIE

GirlGuiding NZ Foundation

The GirlGuiding New Zealand Foundation is a charitable trust whose purpose is to promote and assist GirlGuiding New Zealand. In 2022, the Foundation funded the embedding of Te Tiriti principles across all aspects of Guiding. This has enabled us to update our membership database - Online Guide Manager - to better recognise ethnicity and iwi in member profiles. We have also created a new draft Diversity, Equity and Inclusion (DEI) policy. We have made a conscious effort to feature Te reo Māori more prominently in our programmes, and all sections of GirlGuiding have access to the Te Ao Māori badge and accompanying programme.

Our staff and key volunteers have participated in the Te Whakamānawa cultural competency professional development programme offered by CORE Education. This programme has allowed our team to reflect on their understanding of Te Ao Māori, build and strengthen relationships with whānau, mana whenua, and our community, and gain valuable insights and skills to implement systemic cultural change.



FUNDING GRANTS

We would like to extend a special thank you to the following funders for supporting GirlGuiding NZ during the 2022 financial year.

Albert-Eden Local Board
(Auckland Council)

ANZ Staff Foundation

Aotearoa Gaming Trust

Chenery Memorial Trust

Christchurch Casinos

Charitable Community Trust

Community Trust South

Dunedin City Council

Eastern & Central Community
Trust

Four Winds Foundation

Gallagher Charitable Trust

GirlGuiding New Zealand
Foundation

Glenice & John Gallagher
Foundation

Hibiscus and Bays Local
Board (Auckland Council)

Hutt Mana Charitable Trust

King Edward Trust

Kingston Sedgfield (NZ)

Charitable Trust
(Trustees Executors)

Kiwi Gaming Foundation

Mainland Foundation

Marlborough District Council

North & South Trust Limited

NZ Lottery

Oxford Sports Trust

Rātā Foundation

Rotary Waikato Sunrise

Selwyn District Council

The Carterton & Wairarapa
South County Trust

The Thomas George
Macarthy Trust

The Trusts Community
Foundation

Tikipunga Children's Home

TOI Foundation

Trust Aoraki

Trust House Foundation

Trust Waikato

Waipa District Council

WEL Energy Trust

Whanganui Community
Foundation

World Association of Girl
Guides
and Girl Scouts

World Association of Girl
Guides
and Girl Scouts - Asia Pacific
Region



SUPPORTERS

We would also like to formally recognise and thank all those who have donated and/or provided ongoing support to help us achieve our vision.

Corporate supporters

Auckland Emergency Management (AEM)

Auckland University of Technology (AUT)

Countdown

Davis Funerals

Department of Conservation

Entertainment Publications Limited

Griffin's Food Company

Lincoln University

Macpac New Zealand Limited

Mighty Ape Limited

Moore Markhams

National Emergency Management Agency (NEMA)

Online Distribution

Organic Initiative

Outward Bound

Rewarding Concepts

Shout + Co.

SolutionSmiths Limited

Torpedo7

Woolworths New Zealand

Xtremewear Clothing & Marketing (XCM) Group Limited

Supporters

Michala Beacham

Samantha Bloor

Vicki Brewer

Becky Cooper

Anna Coubray

Estate MF Cresswell

Leony Dudfield

Robyn Dunlop

Estate J Evans

Louise Gardiner

Clinton George

Heather and Selwyn Gubb

Rebecca Heerdegen

Liz Hickey

Sam Hoben

Linda Hogg

Kristine Johnson

Alwyn Heather Kelly

Penny Leach

Hazlett Ltd

Zendie Macahilig

Mary-Ann McAlister

Carl Millar

Raewyn Miller

Estate MG Morrell

Alexa Mossop

Katie Noble

Ginny Radford, LM

Janis Rae

Julia Rutherford

Susie Signal

Veronica Simpkin

Kriselle Smith

Niki Swabey

Lyndsay Taylor

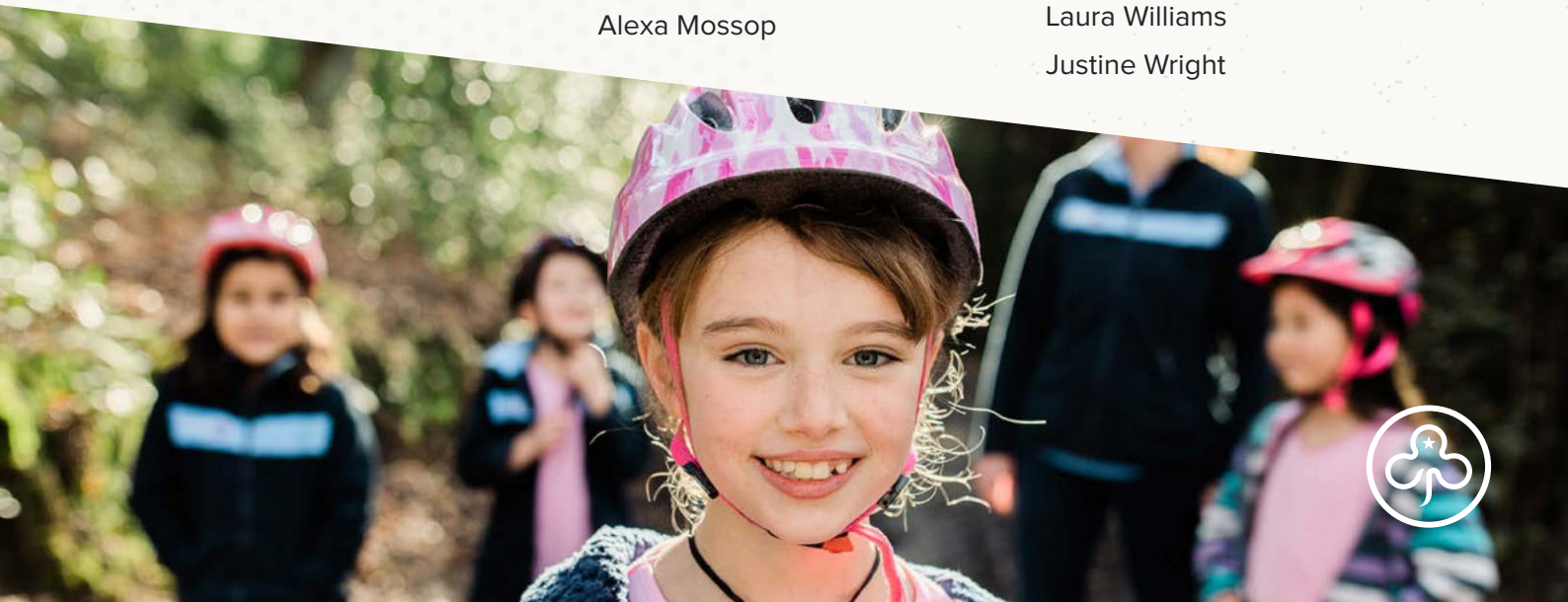
Heather Thomas

Amanda Warwick (in memory of Fay Simpson)

Estate HK Wilkinson

Laura Williams

Justine Wright



FINANCIAL STATEMENTS

The Girl Guides Association New Zealand Incorporated Consolidated Statement of Comprehensive Revenue and Expenses for the year ended 31 December 2022

	Note	2022	2021
		\$	\$
Revenue from Exchange Transactions	2	\$2,689,132	\$2,636,432
Revenue from Non-Exchange Transactions	2	\$1,058,035	\$814,725
Total Operating Revenue		\$3,747,167	\$3,451,157
Girl Programme and Volunteer Expenses		\$1,105,273	\$1,099,865
Employee Entitlements	4	\$2,738,092	\$2,763,734
Property Expenses		\$590,495	\$781,546
Information Technology and Communications		\$277,646	\$237,433
Cost of Goods Sold			\$25,855
Impairment of Assets		\$886,196	
Depreciation and Amortisation	13	\$141,287	\$200,128
Other Expenses	3	\$718,675	\$340,304
Total Operating Expenses		\$6,457,664	\$5,448,865
Operating Deficit Before Net Financing Costs		-\$2,710,497	-\$1,997,708
Finance Income	5	\$186,924	\$140,496
Net Finance Costs		\$186,924	\$140,496
Operating Deficit or The Year		-\$2,523,573	-\$1,857,212
Non-operating Income	6	\$774,038	\$59,593
Net Operating Deficit For The Year		-\$1,749,535	-\$1,797,619
Gain/(Loss) on revaluation of available-for-sale financial assets		-\$521,838	106,595
Total Comprehensive Revenue and Expense for The Year		-\$2,271,373	-\$1,691,024



FINANCIAL STATEMENTS

The Girl Guides Association New Zealand Incorporated Consolidated Statement of Financial Position as at 31 December 2022

	Note	2022 \$	2021 \$
Current Assets			
Cash and Cash Equivalents	7	\$ 1,144,429	1,340,370
Cash Deposits held at Investment Portfolio	7	\$ 1,317,674	3,162,956
Receivables from Exchange Transactions	8	\$ 36,253	25,686
GST Receivable		\$ 21,594	
Prepayments		\$ 105,018	81,233
Financial Instruments-Available for Sale	18	\$ 3,287,638	3,069,155
Inventory	9	\$ 141,489	151,046
Total Current Assets		\$ 6,054,095	7,830,446
Non-Current Assets			
Fixed Interest Investments	18	\$ 1,894,947	654,761
Property, Plant and Equipment	12	\$ 8,061,092	9,824,556
Intangible Assets	13	\$ 32,016	64,778
Total Non-Current Assets		\$ 9,988,055	10,544,095
TOTAL ASSETS		\$ 16,042,150	18,374,541
Current Liabilities			
Payables from Exchange Transactions	10	\$324,800	938,368
Non-exchange Liabilities	11	\$523,210	180,643
GST Payable		\$ -	56,202
Employee Entitlements		\$204,348	185,283
Total Current Liabilities		\$1,052,358	1,360,496
		\$ -	
Non-Current Liabilities		\$ -	
TOTAL LIABILITIES		\$1,052,358	1,360,496
NET ASSETS		\$ 14,989,792	17,014,045
MEMBERS FUNDS			
		\$ -	
Accumulated Funds		\$ 14,148,512	15,150,681
Designated Reserve		\$ -	1,200,000
Restricted Funds	14	\$ 484,008	256,259
Available for Sale Investments Revaluation Reserve		\$ 357,272	407,105
Total Equity		\$ 14,989,792	17,014,045
TOTAL MEMBERS FUNDS		\$ 14,989,792	17,014,045



2022 NATIONAL BOARD

Board Chair

Fiona Harnett
to 31 May 2022

Adrienne Kenney
from 1 June 2022

Deputy Board Chair

Elizabeth Stockley
to February 2022

Chair A&F

Jessica Gilmour
to August 2022

Board Members

Ruby Sands
to May 2022

Lynley Lee
to October 2022

Shaun Greaves
to August 2022

Hayley Coyne

Mirjam Oord

Siva Sivapakkiam

Cory Gordon

Ciara Gibson
from June 2022

Simon Tran
from November 2022

Sacha McDonald
from November 2022

Chief Executive

Susan Coleman
to August 2022

Lauren McKinnon
from August 2022



COMING IN 2023

**RESTART
THE RANGER
ADVOCACY
PANEL**



**PARTICIPATION IN
WORLD CONFERENCE
IN CYPRUS**



**NEW
MATARIKI
BADGE!**



**INTERNSHIPS
AT GIRLGUIDING
WORLD CENTRES**

GIRL LEAD RESEARCH

**5-YEAR
STRATEGY**





**GirlGuiding
New Zealand**
Ngā Kōhine Whakamahiri O Aotearoa

The Girl Guides Association New Zealand Incorporated
Trading Name: GirlGuiding New Zealand

Registered Charity # CC22069

PO Box 13143
Christchurch 8141

c/- Christchurch Community House Trust
Te Whakaruruhau ki Otautahi
213 Lichfield Street,
Christchurch 8011

www.girlguidingnz.org.nz