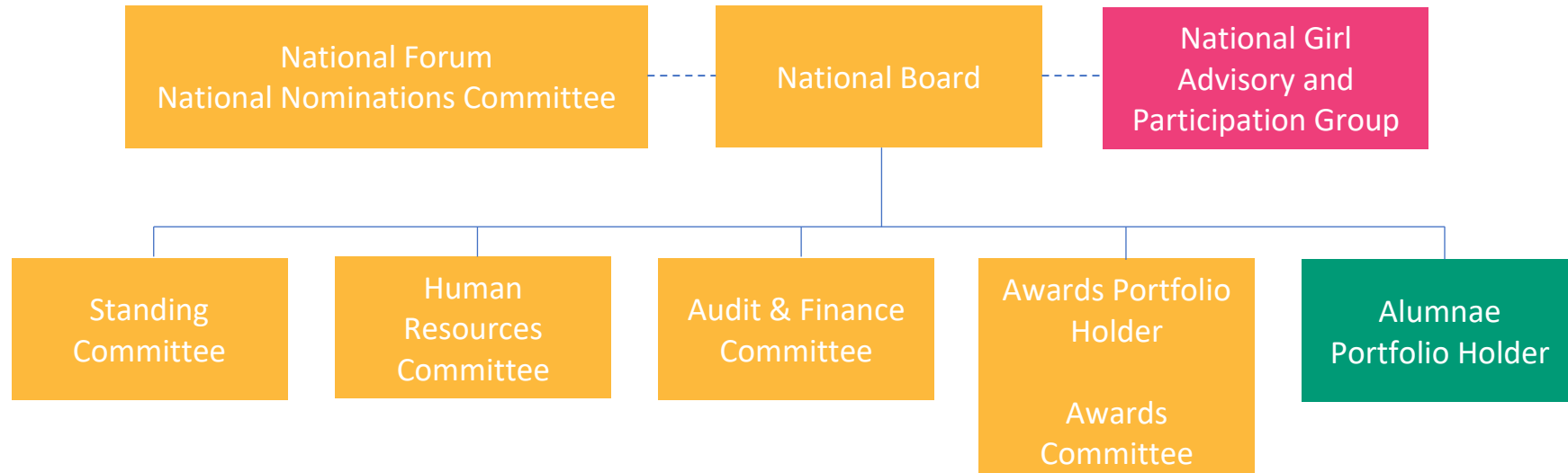
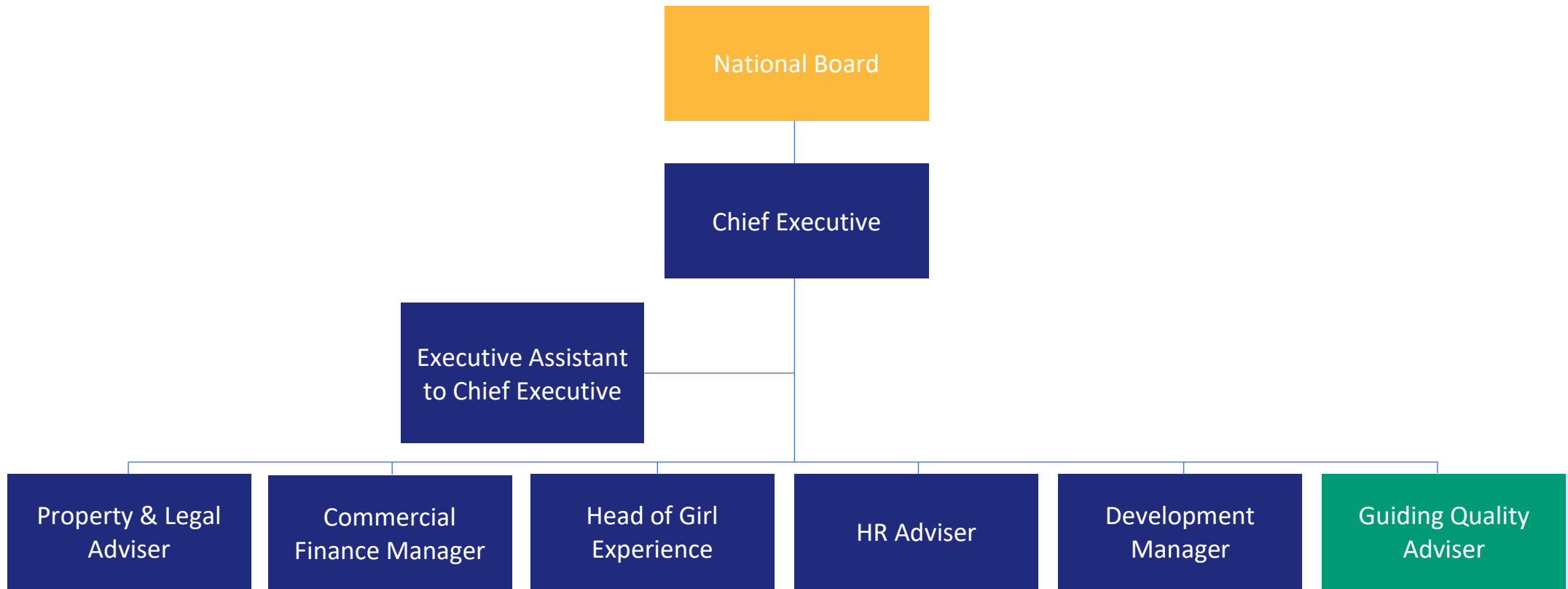


GOVERNANCE



- Staff Function/Role
- Volunteer Function/Role
- Volunteer Committee
- Girl Function/Role

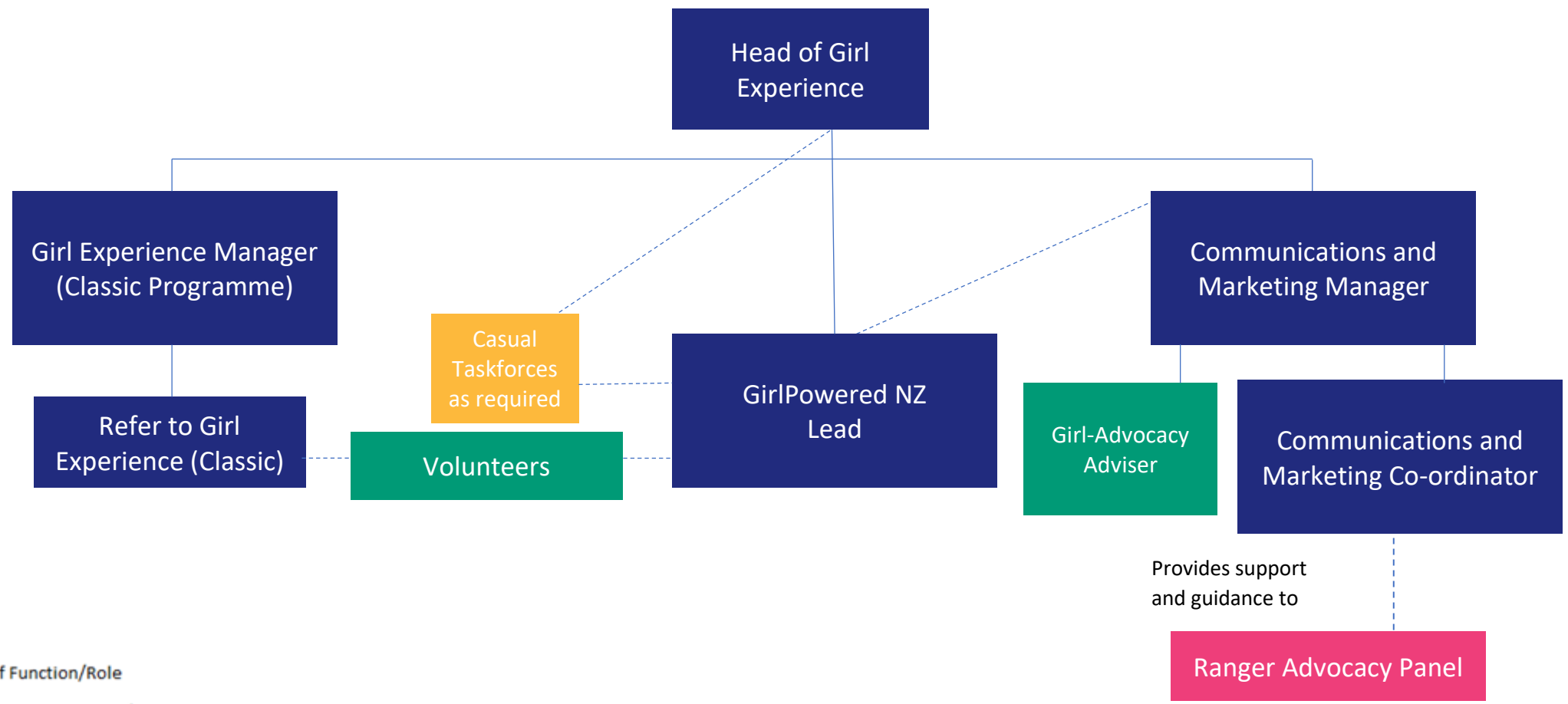
GUIDING LEADERSHIP



- Staff Function/Role
- Volunteer Function/Role
- Volunteer Committee
- Girl Function/Role

Unless otherwise stated, staff positions are based in Christchurch

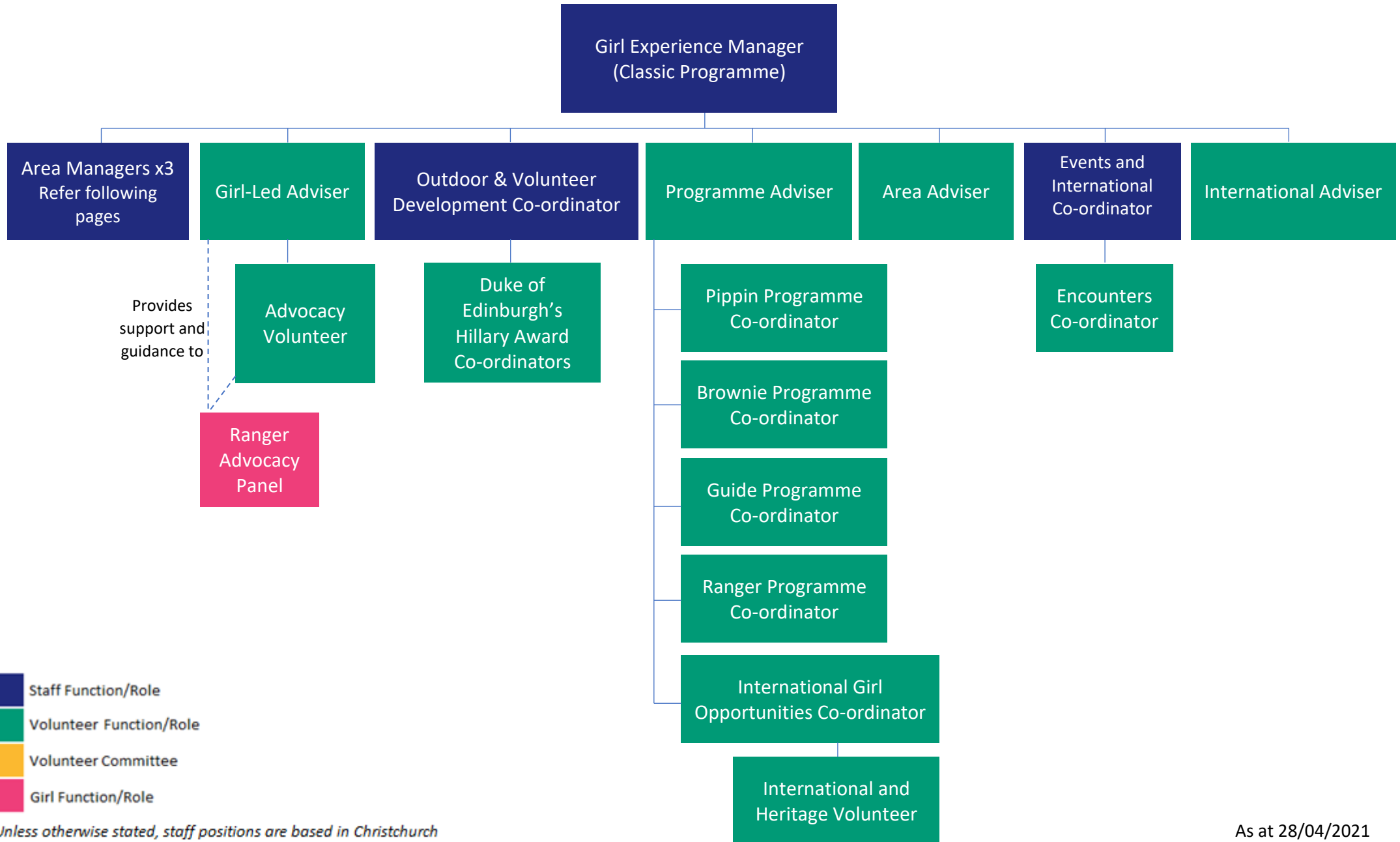
GIRL EXPERIENCE



- Staff Function/Role
- Volunteer Function/Role
- Volunteer Committee
- Girl Function/Role

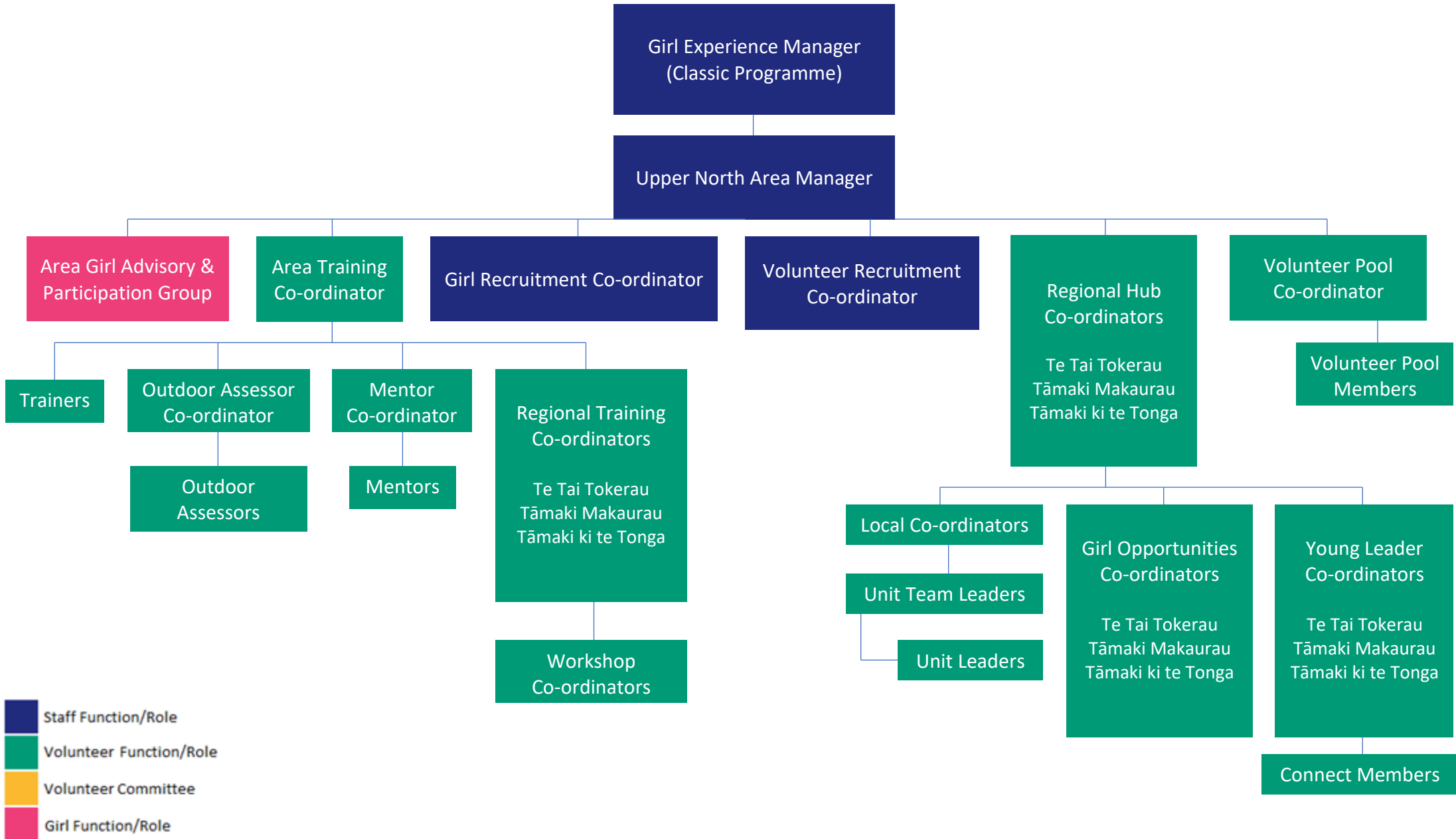
Unless otherwise stated, staff positions are based in Christchurch

GIRL EXPERIENCE (CLASSIC)

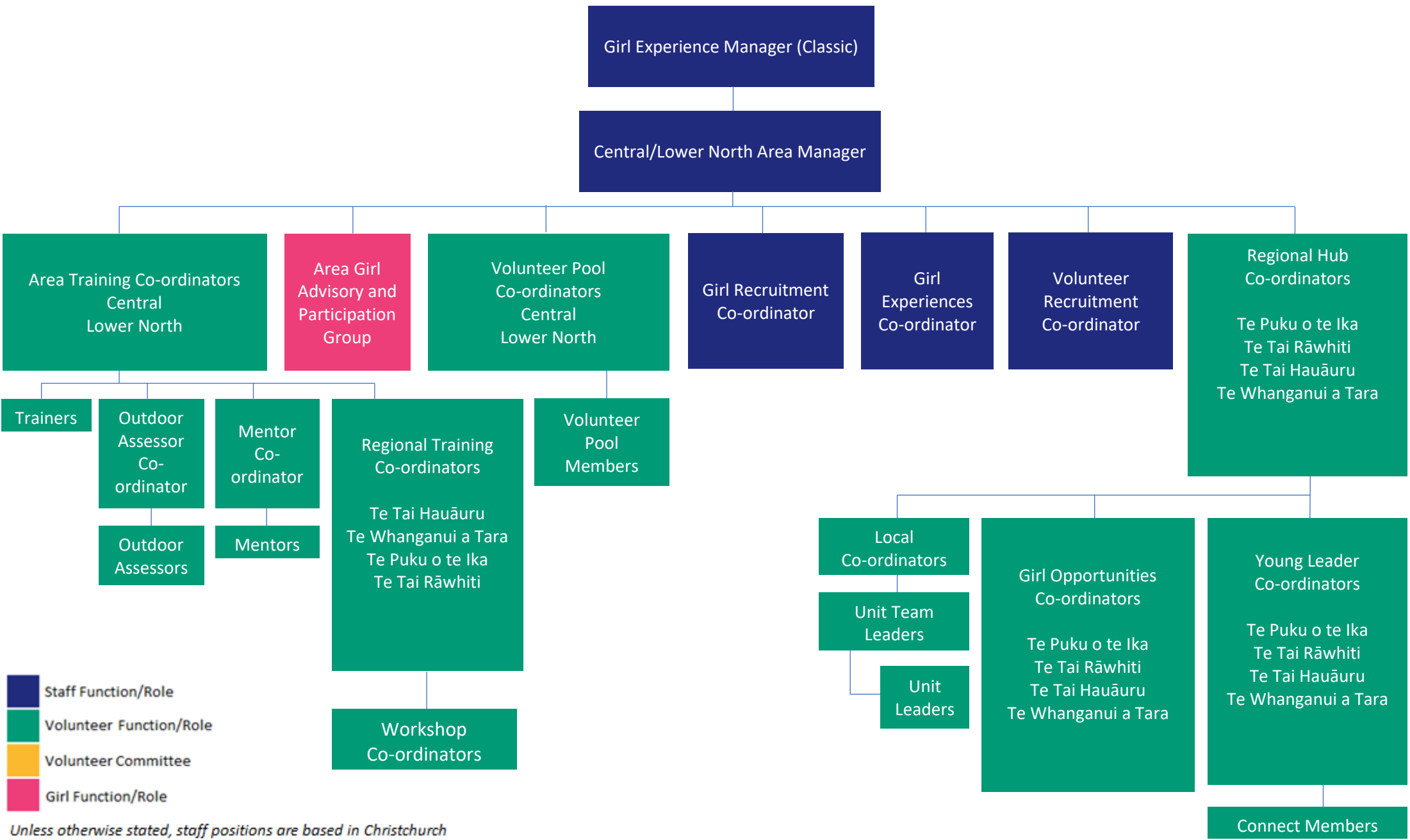




GIRL EXPERIENCE (CLASSIC – UPPER)



GIRL EXPERIENCE (CLASSIC – CENTRAL/LOWER NORTH)

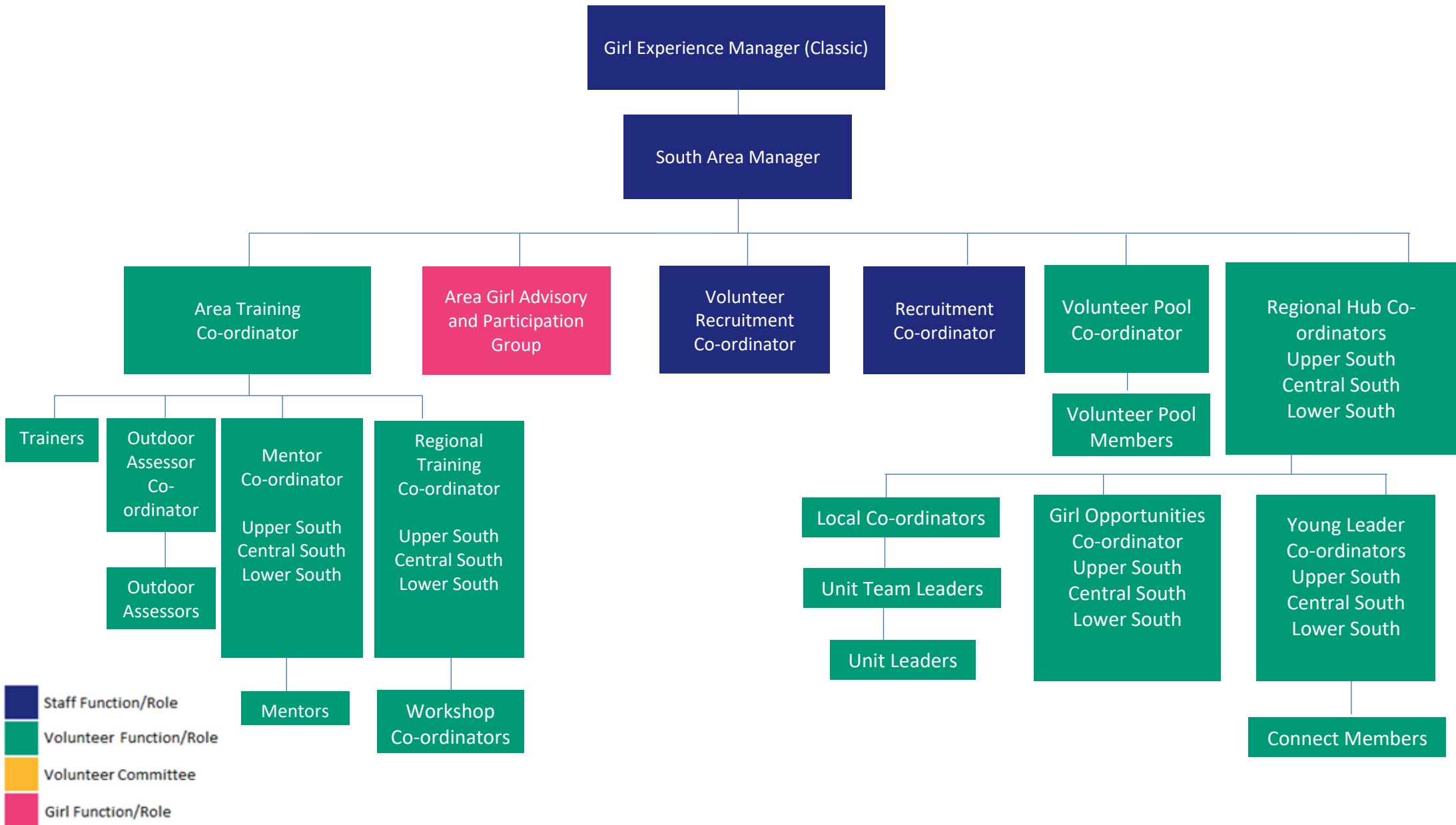


- Staff Function/Role
- Volunteer Function/Role
- Volunteer Committee
- Girl Function/Role

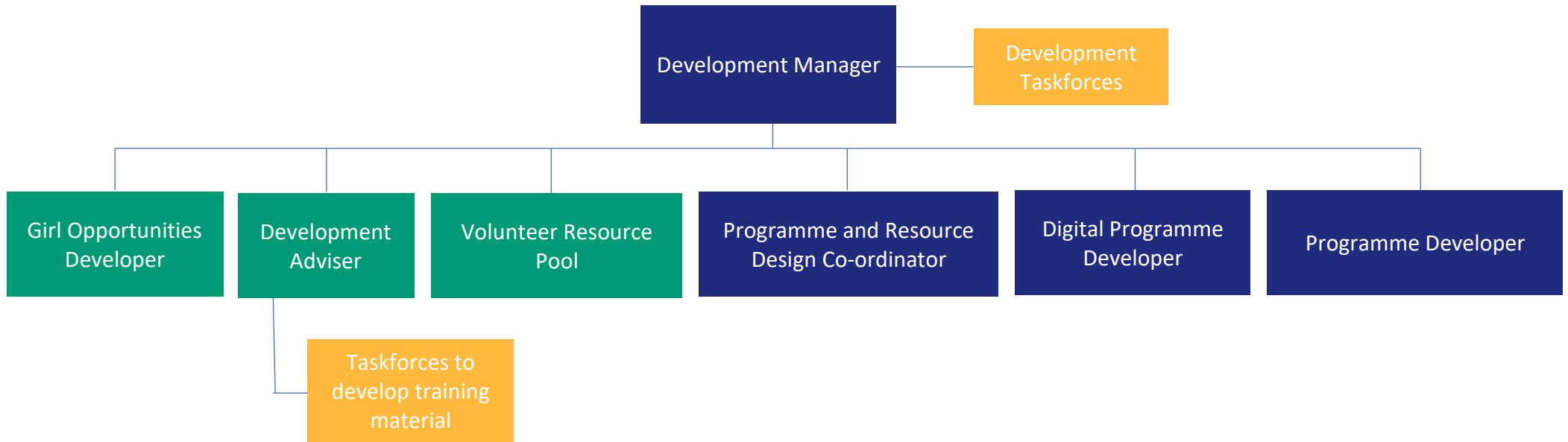
Unless otherwise stated, staff positions are based in Christchurch



GIRL EXPERIENCE (CLASSIC – SOUTH)

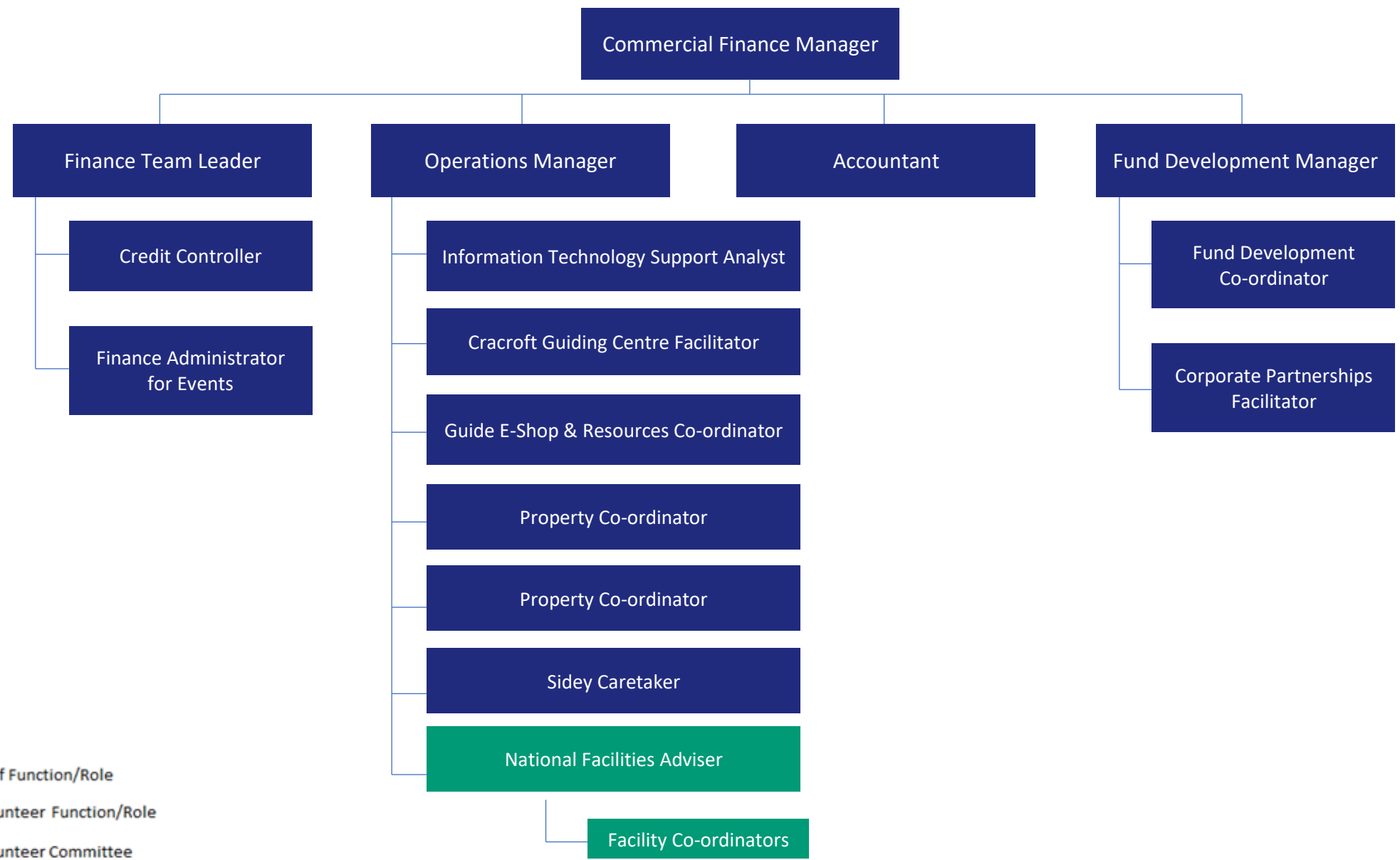


DEVELOPMENT



- Staff Function/Role
- Volunteer Function/Role
- Volunteer Committee
- Girl Function/Role

BUSINESS SERVICES



- Staff Function/Role
- Volunteer Function/Role
- Volunteer Committee
- Girl Function/Role

Unless otherwise stated, staff positions are based in Christchurch